

AIRWORTHINESS BULLETIN

Cracking in Nose Landing Gear upper strut sections of Cirrus SR20 and SR22 aircraft

AWB 32-015 **Issue :** 2
Date : 24 November 2009

1. Applicability

Cirrus Design, SR20 and SR22 series aircraft.

2. Purpose

The purpose of this AWB is to bring to the attention of operators and maintainers that there have been numerous reports of cracking found in Nose Landing Gear strut upper sections of both CIRRUS SR20 and SR22 aircraft.

3. Background

Recent defect reports have indicated that cracking has occurred around the Nose Landing Gear upper support gusset and strut attachment welds.

Cirrus Mandatory Service Bulletins 2X-32-18 R4 & 2X-32-19 address the cracking on SR20 & SR22 aircraft respectively. Additionally, FAA SAIB CE-09-46 now refers to the condition.



4. Recommendation

CASA recommends that all operators of CIRRUS SR20 aircraft:

- Carry out a detailed inspection of the area around the fillet weld between the upper gusset plate and attach point arms in accordance with Cirrus Mandatory Service Bulletin 2X-32-18 R4 or later revision and instructions for inspection in Cirrus AMM Chapter 32-20.
- Continue to inspect at intervals determined in the service bulletin or replace gear with a Cirrus improved NLG strut when available.

AIRWORTHINESS BULLETIN

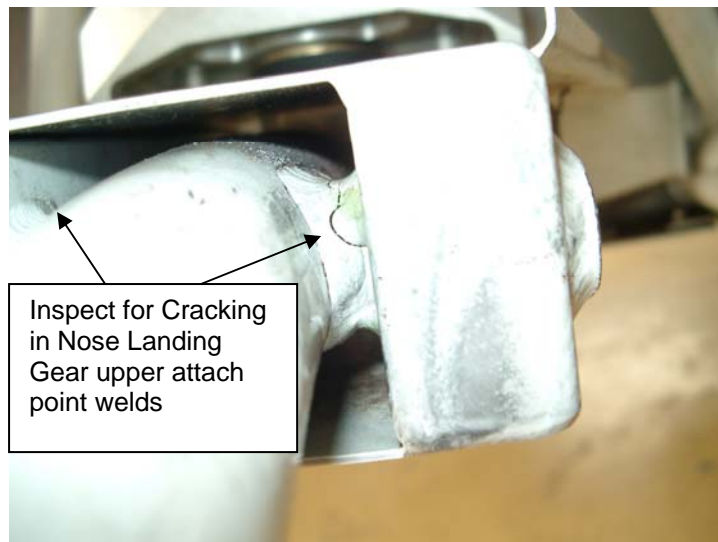
Cracking in Nose Landing Gear upper strut sections of Cirrus SR20 and SR22 aircraft

AWB 32-015 **Issue :** 2
Date : 24 November 2009

It is recommended that all operators of CIRRUS SR22 aircraft:

- Carry out a detailed inspection of the area around the fillet weld between the upper gusset plate and attach point arms in accordance with Cirrus Mandatory Service Bulletin 2X-32-19 or later revision and temporary instructions for inspection in Cirrus AMM Chapter 32-20-02
- Continue to inspect at intervals determined in the service bulletin and reinforce gear in accordance with Cirrus approved repair item F.

Report all instances of cracking to Cirrus and to CASA through the Service Difficulty Reporting (SDR) System.



5. Enquiries

Enquiries with regard to the content of this Airworthiness Bulletin should be made via the direct link e-mail address:

AirworthinessBulletin@casa.gov.au

Or in writing, to:

Airworthiness Engineering Branch
Civil Aviation Safety Authority
GPO Box 2005, Canberra, ACT, 2601