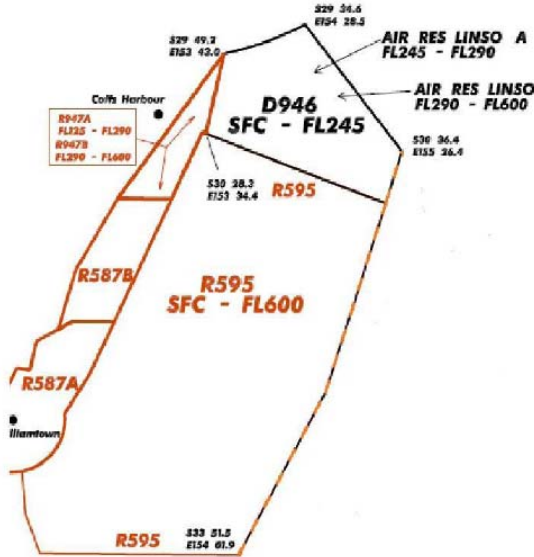


1.1. Presentation Slides WGCDR Cooper

MILEX Plans

ACES SOUTH



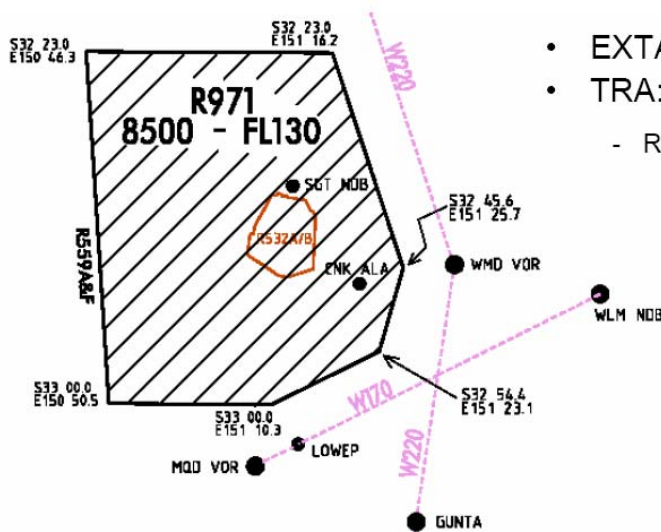
- DATES: 22 – 25 Sep 08
- TIMINGS: AM
PM
- EXTANT WLM AIRSPACE
- TEMPORARY RESERVED AIRSPACE:
 - LINSO A – FL245 – FL290
 - LINSO B – FL290 – FL600
- TEMPORARY RESTRICTED AREAS:
 - HAVOC A – FL125 – FL290
 - HAVOC B – FL290 – FL600
- TEMPORARY DANGER AREA:
 - D946 – SFC – FL245



HEADQUARTERS JOINT OPERATIONS COMMAND
AIR and SPACE OPERATIONS CENTRE



ACES STRIKE



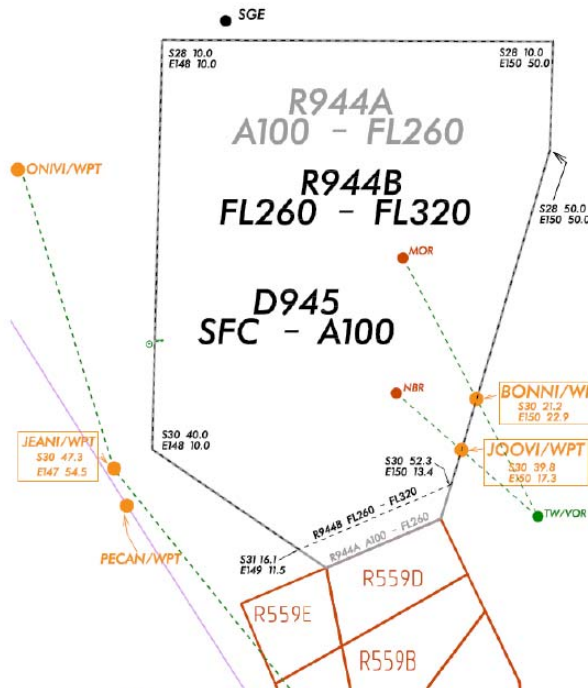
- DATES: 13 Oct – 31 Oct 08
- TIMINGS: AM
PM
- EXTANT WLM & SGT AIRSPACE:
- TRA:
 - R971 (SINGLETON) A085 – FL130



HEADQUARTERS JOINT OPERATIONS COMMAND
AIR and SPACE OPERATIONS CENTRE



ACES STRIKE (CONT'D)



- DATES: 13 Oct – 31 Oct 08
- TIMINGS: AM
PM
- EXTANT RIC AIRSPACE:
- TRA:

R944A	A100 – FL260
R944B	FL260 – FL320
- TDA:

D945	SFC – A100
------	------------



HEADQUARTERS JOINT OPERATIONS COMMAND
AIR and SPACE OPERATIONS CENTRE



Training Area Concepts

New ADF platforms

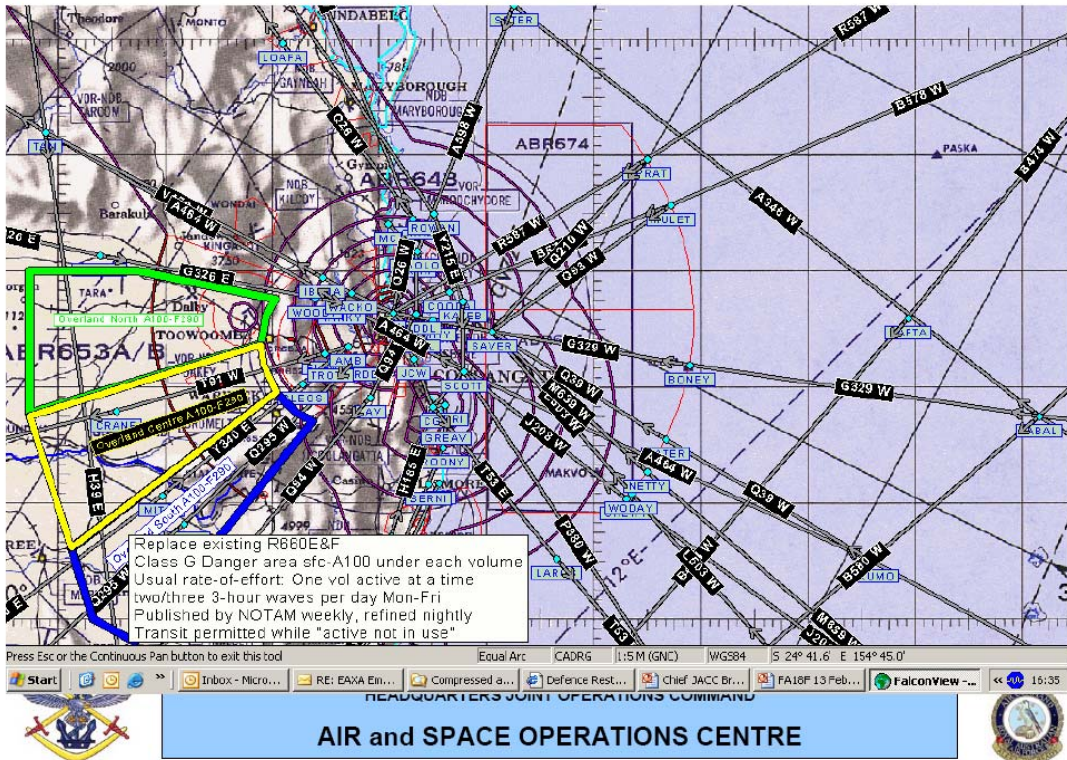
- FA18F
- AEW&C Wedgetail
- KC30B Tanker/Transport
- Joint Strike Fighter?
- More operations
- More airspace for longer periods?
- Options?
 - SE QLD is starting point



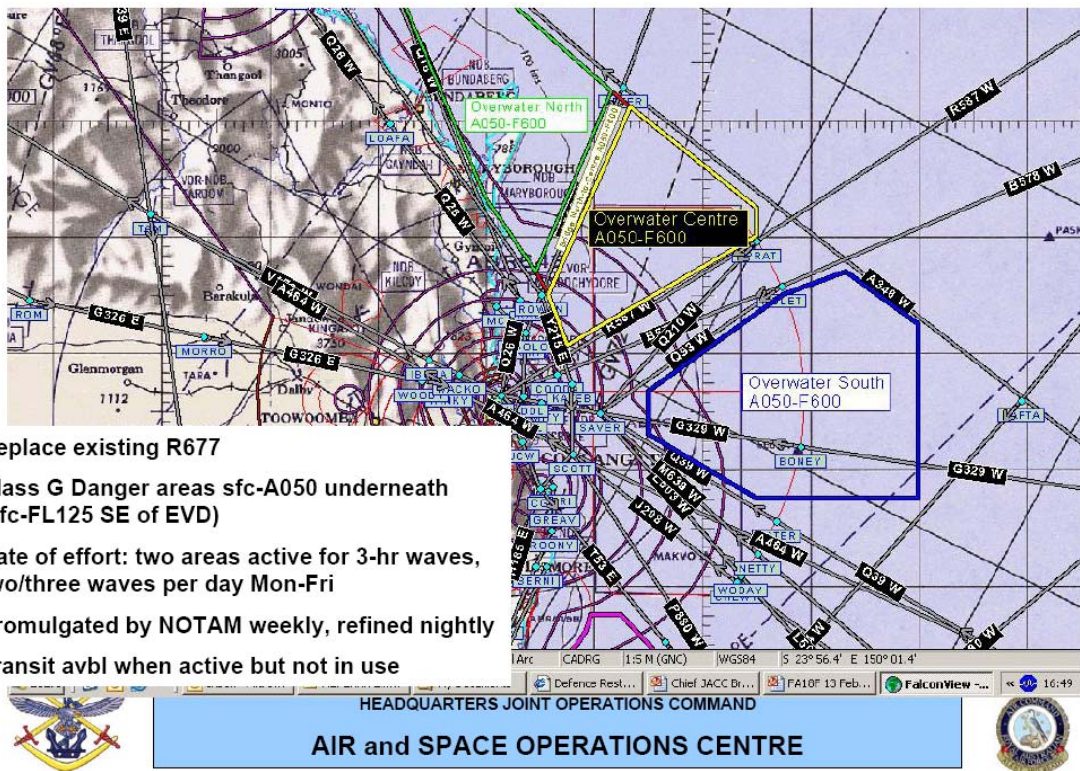
HEADQUARTERS JOINT OPERATIONS COMMAND
AIR and SPACE OPERATIONS CENTRE



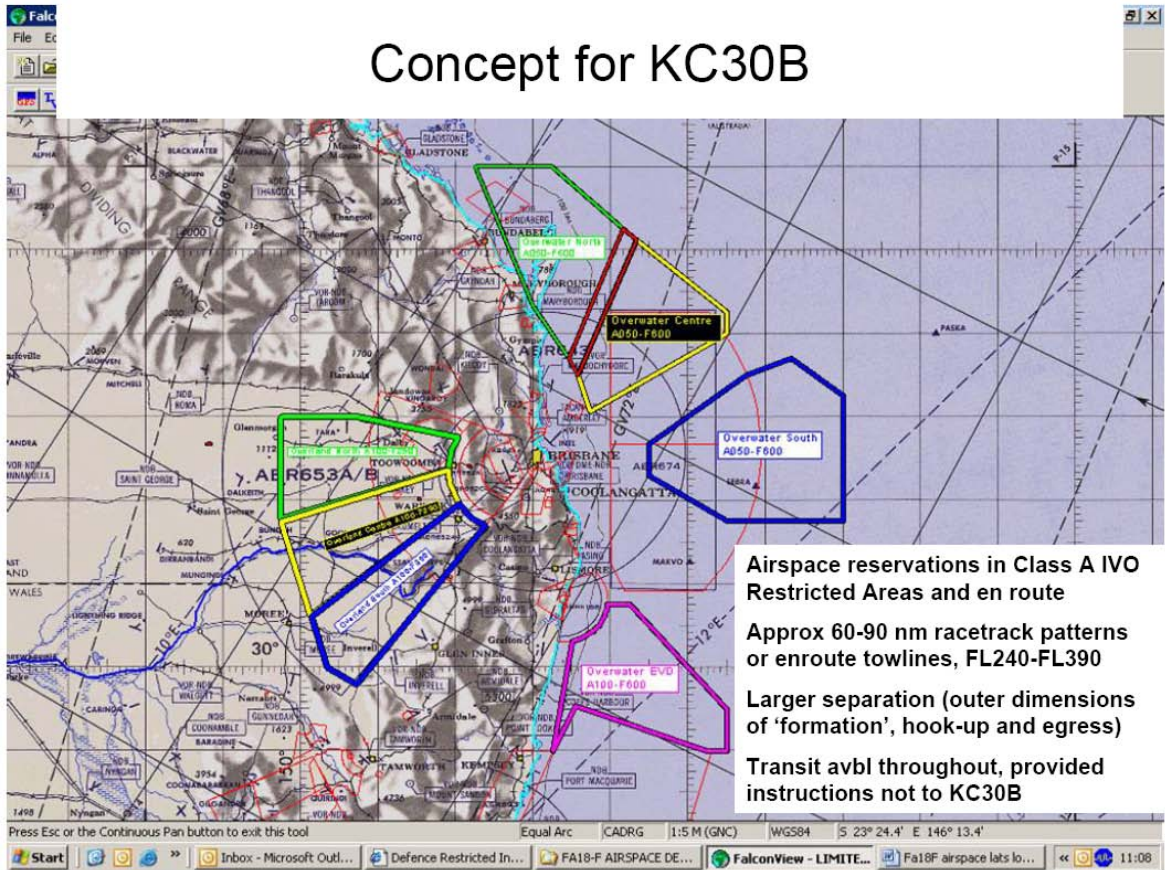
Concept for SE QLD Overland



Concept for SE QLD Overwater



Concept for KC30B



Concept for Wedgetail

